



The Greek International  
Ship Repair Network

**SHIP@LINK**



**SHIP@TECH**

# About Us

SHIPTECH Engineering and Associated SHIPLINK S.A., originally established in 1993, at Piraeus, Greece, are activated in Turn - Key Projects entailing Engineering, Procurement, Ship Repair Management and Contracting, both in Greece and abroad.

Our long record of Projects has been extended in the recent years to retrofits Services in Greece and abroad for:

Ballast Water Treatment Systems (BWTS) on ships

Exhaust Gas Cleaning Systems (EGCS).

SHIPLINK is well established with shipyards and ship repair contractors, located in prominent ship repair locations worldwide such as North Europe, Baltic Sea, Greece, Turkey, Romania, the Middle East, Singapore and China.

Our Piraeus personnel, having an extensive experience and background in the technical and commercial aspects involved in ship repairs, conversions and modifications are working in close cooperation along with our personnel and contractors, based locally in key areas around the world as one "team". SHIPLINK's repairs management and contracting is offering a value added service to our Clients.

Our SHIPLINK "team" is capable of handling complex projects on a turn-key basis, offering our Clients an in-depth knowledge and leverage in the local markets.

# Our Approach





# Our Shipyard Network

SHIPLINK Shipyard Network comprises of a number of carefully selected Ship repair Yards worldwide, that we have worked with them several times in the past and have successfully completed a number of Dry-dockings and Ship-repairs for a number of Greek and other International Clients.

Worldwide locations for dry-docking of Ships include North Europe, Baltic Sea, Greece, Turkey, Romania, the Middle East, Singapore and China, as the most commonly favoured places for Dry-dockings and Ship-repairs.

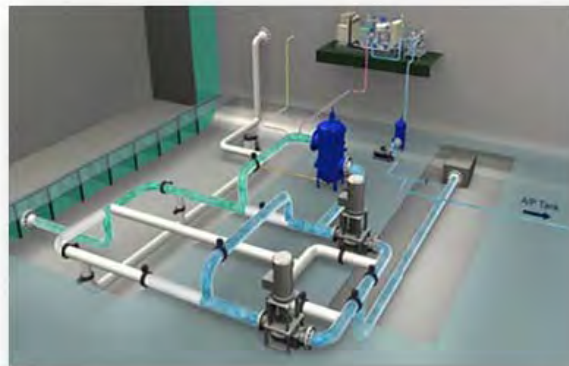


# INSTALLATION SERVICES

**Our Strengths:**

- Attending with qualified senior engineers on installation work.
- Managing & resolving any additional details in cooperation with the Class & Makers.
- Dedicated Expert Riding Teams for On Voyage Installations
- Worldwide coverage for Installations abroad, with various Yards and subcontractors

# BWTS PROJECTS

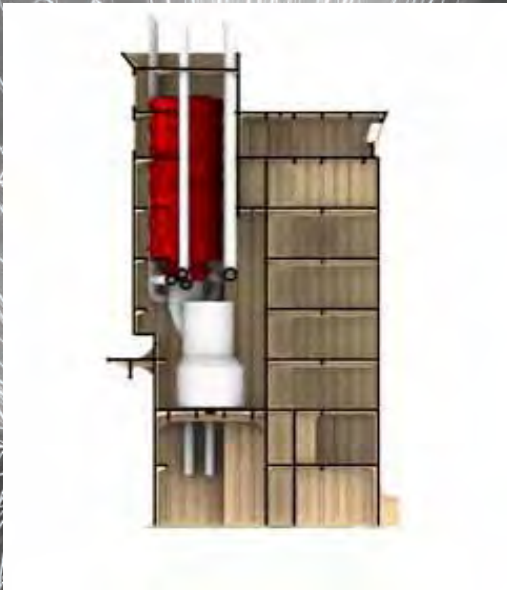


No. of Ships	Vessel Type	Vessel Size	BWTS Maker
4	Bulk Carrier	76000	Headway
4	Containership	1700 TEU	ALFALAVAL
3	Bulk Carrier	38800	TEHCROSS
3	Containership	1700 TEU	<b>Pending</b>
2	Bulk Carrier	38800	TEHCROSS
11	Bulk Carrier	80500	Headway
6	Bulk Carrier	76000	ALFALAVAL
2	Tanker	80000	Headway
3	Bulk Carrier	76000	PANASIA
5	Bulk Carrier	57000	<b>Pending</b>
3	Bulk Carrier	57000	Headway
4	Bulk Carrier	93000	TEHCROSS
2	Bulk Carrier	35000	Headway
3	Tanker	48000	TEHCROSS
5	Bulk Carrier	81000	<b>Pending</b>
3	Tanker	20000	ALFALAVAL
5	Bulk Carrier	57000	Headway
1	Tanker	16000	ALFALAVAL

## Type of vessels:

Containership / Tanker / Bulk Carrier / Passenger

# ECGS PROJECTS



Vessel Type	Vessel Size DWT/TEU
Containership	6500
Containership	8000
Containership	8000
Crude Oil Carrier	318000
Crude Oil Carrier	158000
Bulk Carrier	61500
Crude Oil Carrier	316700
Crude Oil Carrier	176200
Bulk Carrier Bulk	178800
Carrier Bulk	176000
Carrier Bulk	81500
Carrier Bulk	92500
Carrier Bulk	82000
Carrier Bulk	82000
Carrier	92500
Passenger RoRo	7500
Passenger RoRo	7500

Type of vessels:  
Containership / Tanker / Bulk Carrier / Passenge

# ACCOMMODATION WORKS

## YACHTS - CRUISE SHIPS- PASSENGER SHIPS

- Lining and partition panels  
B-O, C class , custom made , wood veneered ,lacquered , fabric covered
- Ceiling Panels  
B-D, B-IS, C-Class, custom made aluminum, honeycomb, vanished , lacquered etc.
- Custom made furniture  
Construction and installation from various marine certified materials, plywood, honeycomb, mdf textiles
- Floors  
Supply and installation of various type of certificated materials such as vinyl LFD carpets tiles, floating floor A-O, A60
- Doors  
Supply and installation of B-O B-IS A-60 or Custom made wooden, lightweight, glass doors
- Exterior Deck  
Construction of teak or synthetic exterior deck



# Services include:

- Dry-docking services
  - Black Sea (up to Aframax size)
  - Baltic Sea (up to Suezmax size)
  - Turkey (up to Panamax size)  
up to Suezmax size.
  - China (all sizes up to VLCC size)
- Repairs at Berth/Afloat/Anchorage (depending on location)
- Steel works and Piping
- Blasting, Painting and Coating works
- Mechanical works and overhauls for ME/DGs/Turbochargers
- Manufacturing, Supply, Service and Installation of deck cranes, ship cranes, cargo cranes, service cranes, life raft cranes, ship machinery, deck equipment, deck machinery, hatch covers, propulsion systems, manoeuvring systems, ladders, rescue boats, hydraulic equipment.
- Electrical, Automation, Control
- Inspection & Service for Lifeboats / LSA / FFE
- Design, supply and retrofit of Ballast water treatment systems
- Provision of Steel, Pipe, Mechanical & Boiler fitters for voyage repairs.

# Our Associates





**YOUR LINK  
TO SHIP REPAIR SERVICE  
WORLDWIDE**

The logo for SHIP LINK, featuring the word "SHIP" in a blue box, a stylized infinity symbol, and the word "LINK" in a white box.

1, Kanari & Akti Miaouli  
GR 18537  
Piraeus / GREECE  
T (+30) 210 4533763

Email: [sales@shiplink.gr](mailto:sales@shiplink.gr)

[www.shiplink.gr](http://www.shiplink.gr)

The logo for SHIP TECH, featuring the word "SHIP" in a blue box, a stylized infinity symbol, and the word "TECH" in a white box.